

# Tourism and multiple stressors in Antarctica

Dr Tom Hart  
Department of Biology



UNIVERSITY OF  
OXFORD



# WHAT IS THE OBSERVED AND POTENTIAL IMPACT OF TOURISM ON ANTARCTIC PENGUINS?

An Evidence-Based Executive Summary





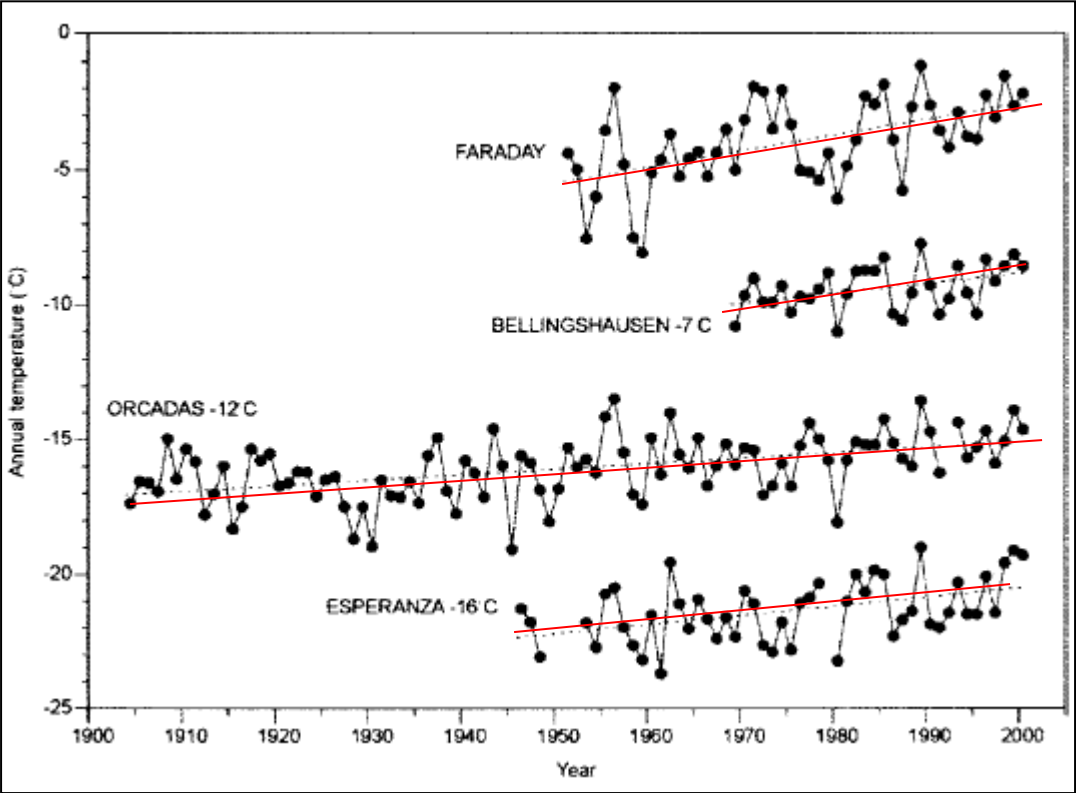


Christo Baars Australian Antarctic Division



Image: 'The Antarctic Butcher', a painting by Standish Backus (1956); from the U.S. Naval Art Collection via The Conversation.

Warming trend over the past century (+2.6°C)



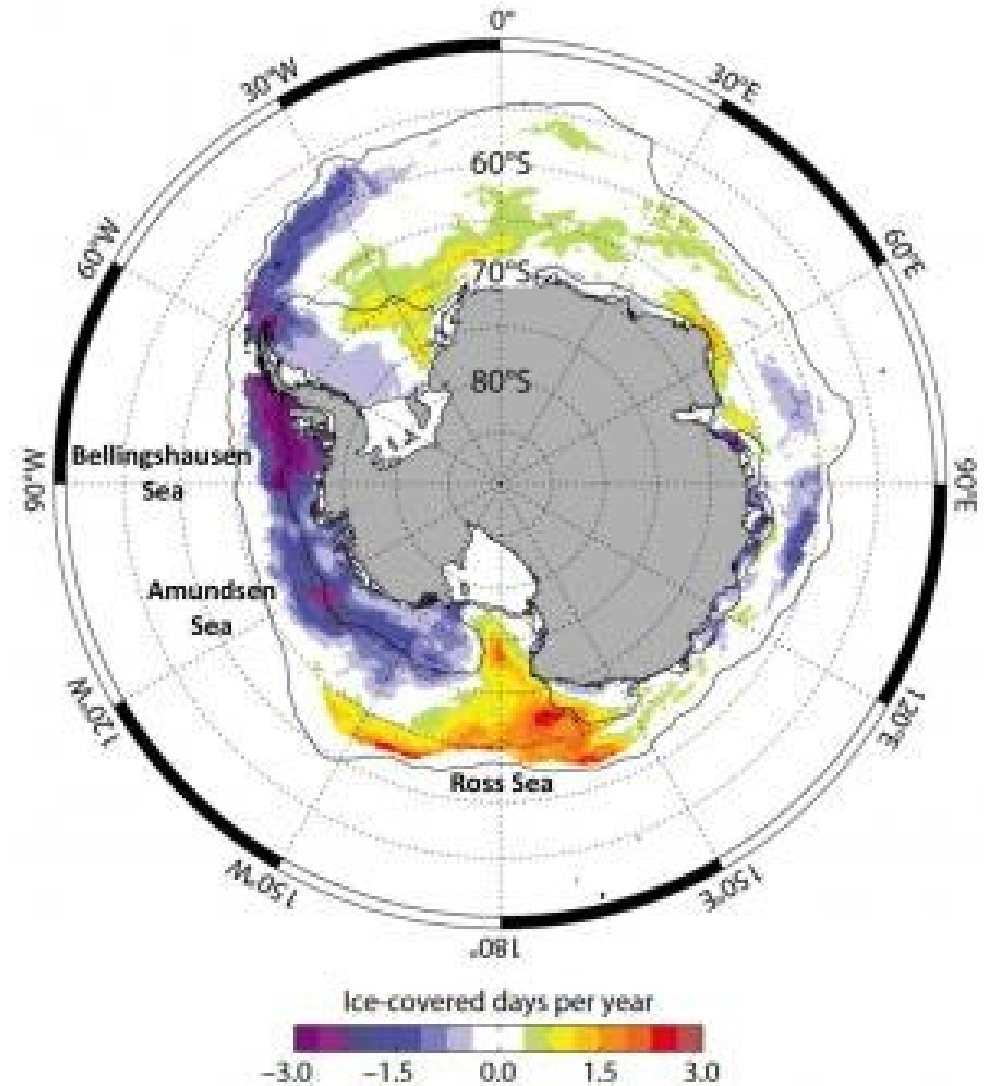




© Sue Forbes



Sea ice trends over the last 40 years



# Understanding the problem

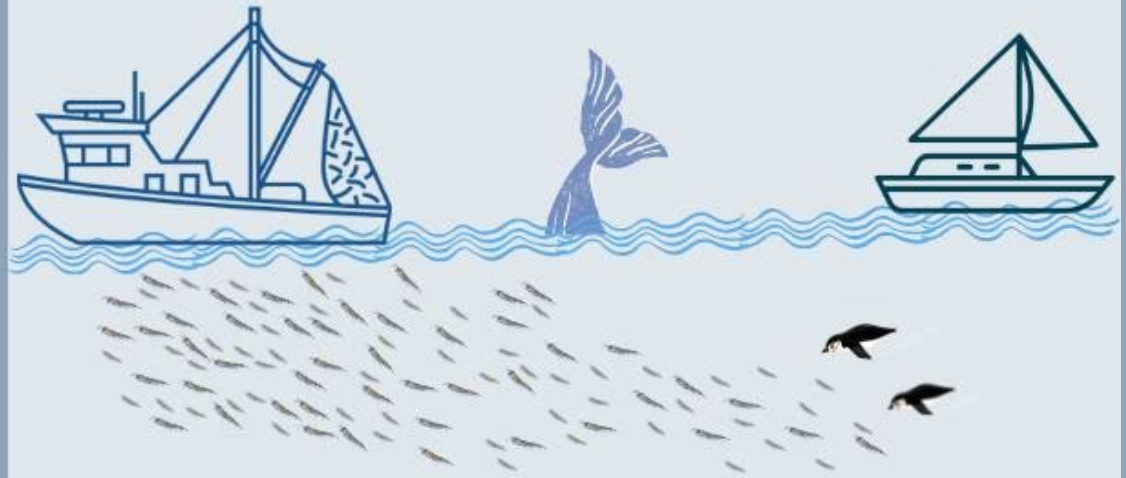


Population changes



**Climate change and extreme weather events** +

**Fishing** + **Competition** + **Visitors**



*Fishing boat by Martin Lebreton and Traditional boat by Anagaja Design from NounProject.com*

↪ **Untangling confounding threats**

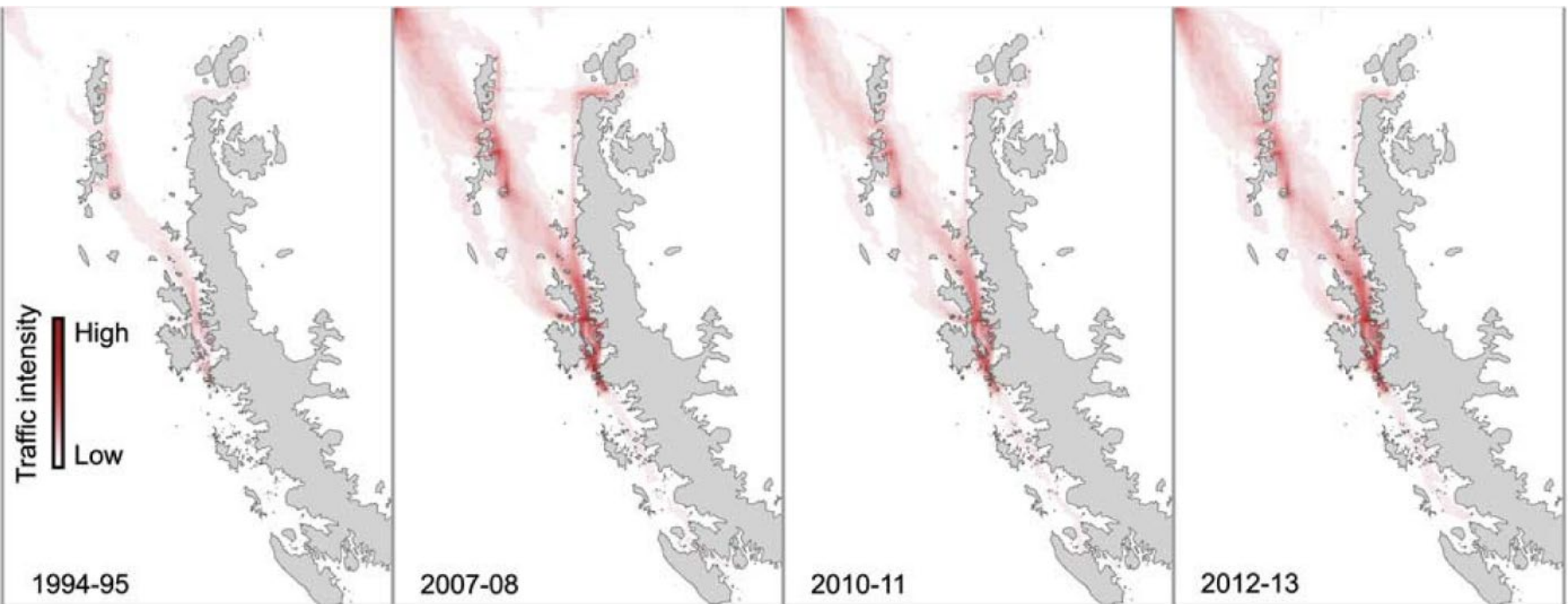




Image: E. M. Jones



### Gentoo penguin

- Northerly breeding
- Avoids sea-ice



### King Penguin

- Northerly breeding
- Avoids sea-ice
- Deep sea forager, eats squid and fish



### Chinstrap penguin

- Intermediate breeding distribution
- Avoids sea-ice



### Adélie penguin

- Southerly breeding distribution
- Requires pack-ice for foraging



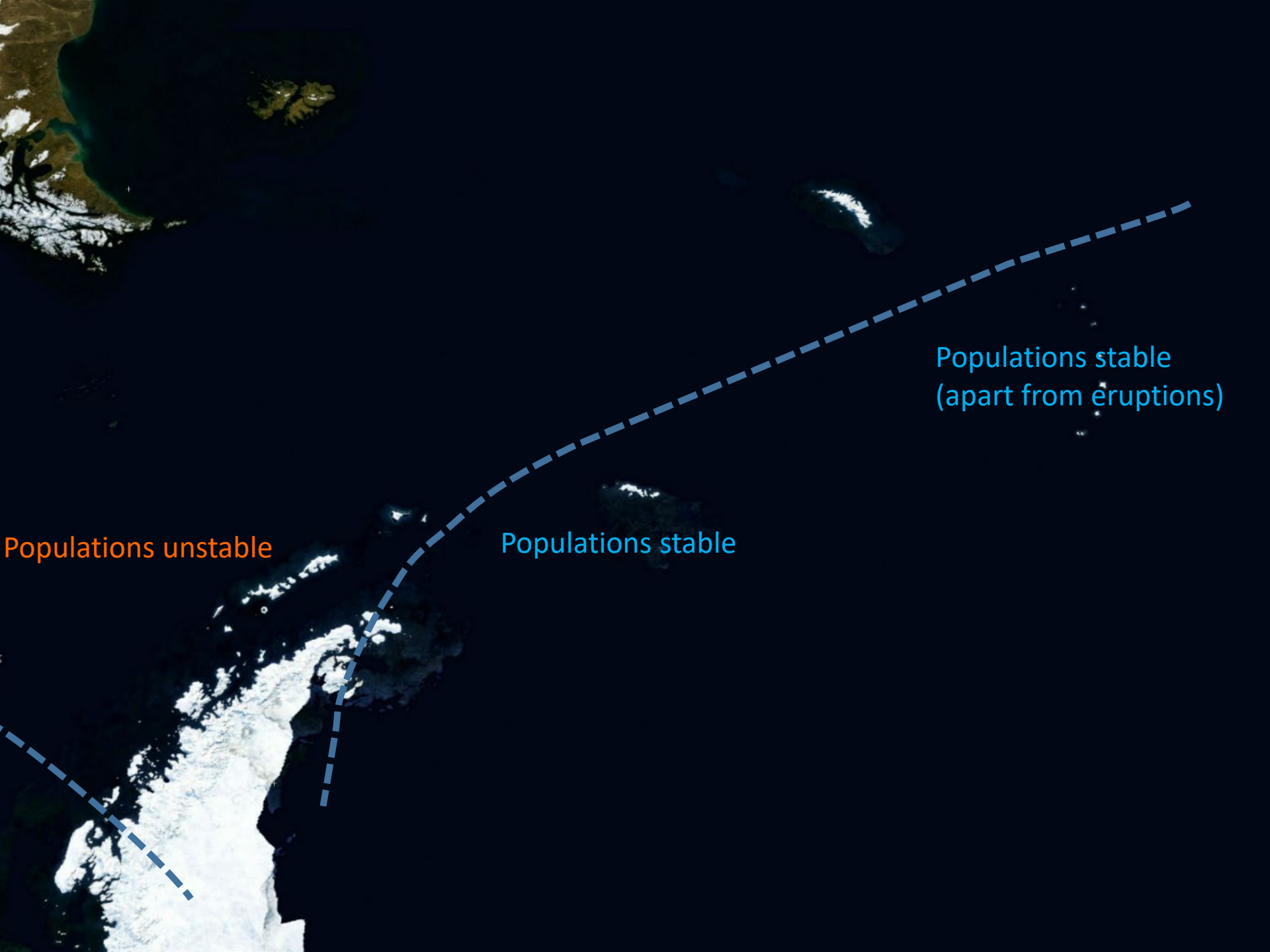
### Emperor Penguin

- Southerly breeding
- Requires fast-ice.
- Declining where monitored
- But possible changing distribution.



### Macaroni Penguin

- Sub-Antarctic
- Avoids sea-ice
- Krill –rich waters



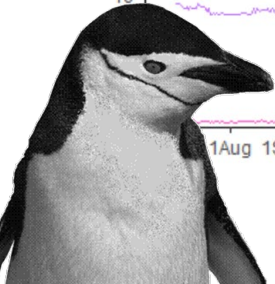
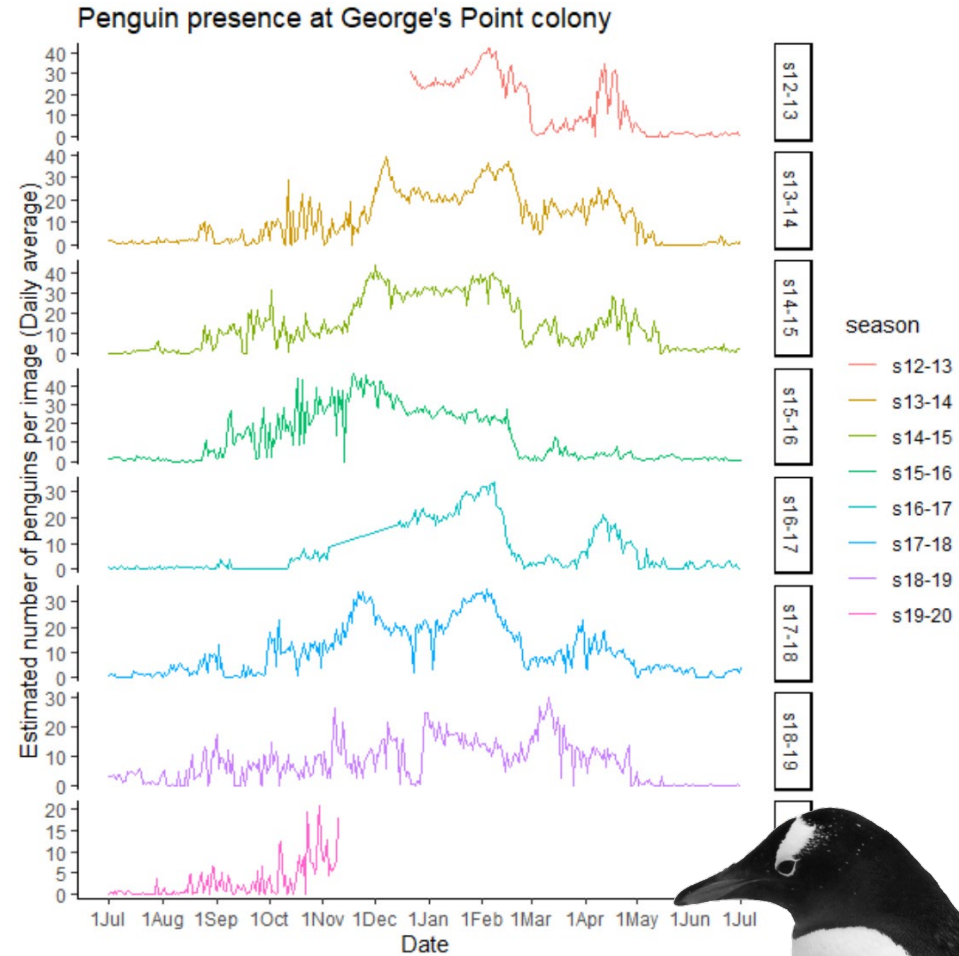
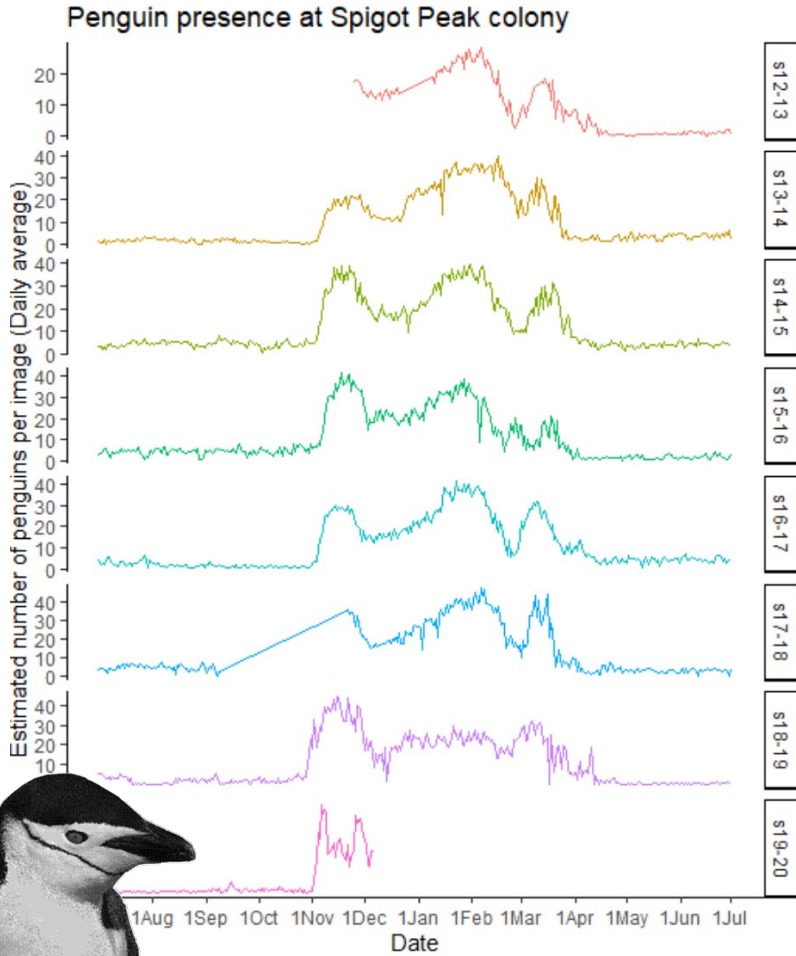
Populations unstable

Populations stable

Populations stable  
(apart from eruptions)



# Unpublished evidence that penguins are breeding earlier

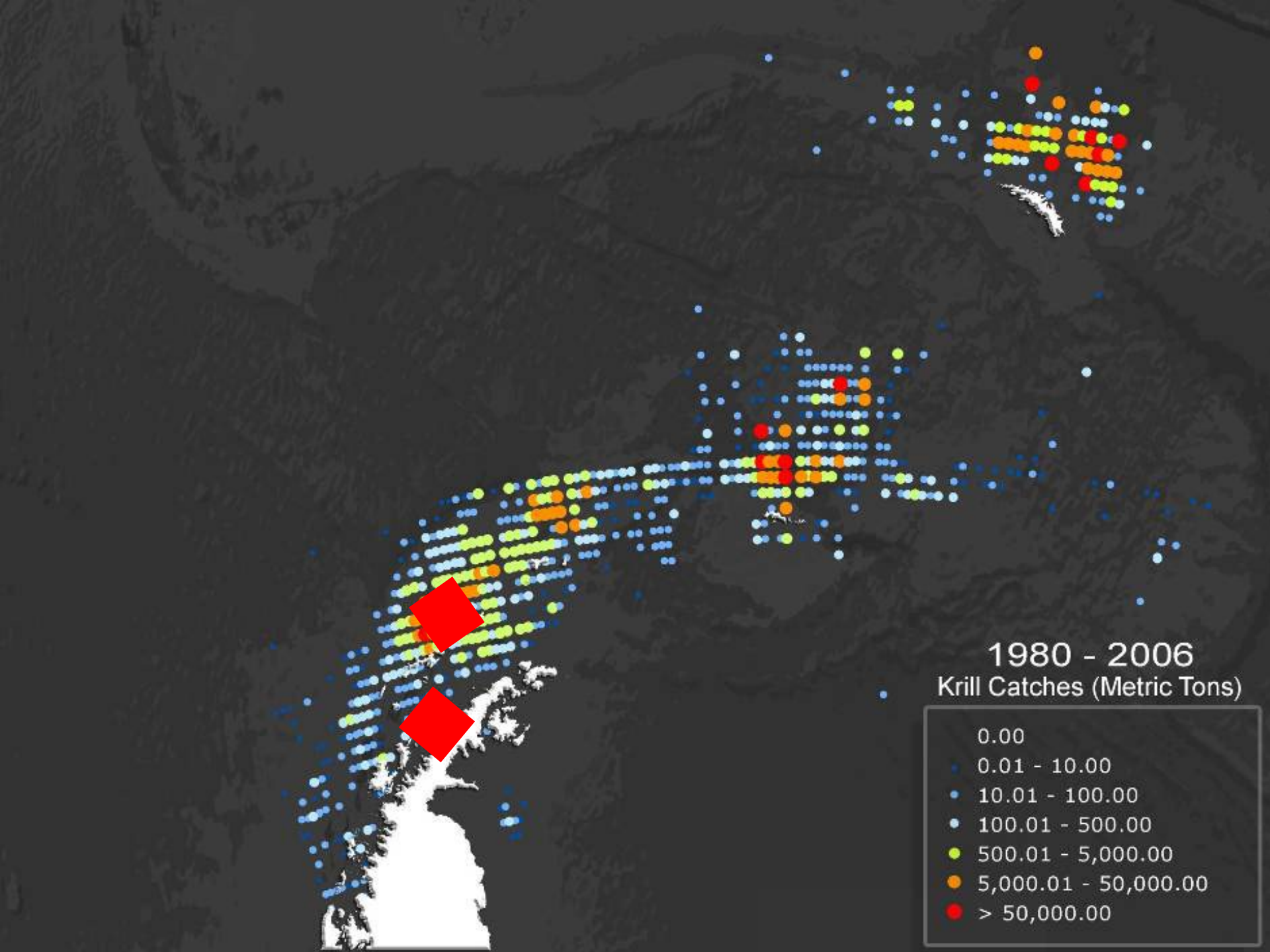




# Summary of current evidence

- There are multiple anthropogenic threats
- No significant adverse effects of tourism on local penguin populations *at current levels and with current activities*
- “Tourism” does not include national programme visits
- We don’t know much about disturbance of other species, like seals and whales, or on penguins while in the water.
- Studies examining the impact of site visitations on the Southern Ocean penguin populations have drawn inconsistent conclusions. Details likely matter.
- Other stressors such as climate change and the fishing industry should receive greater attention.
- Future change may be driven by sea ice regardless of other stressors







**Thank you!**

Thanks to:

